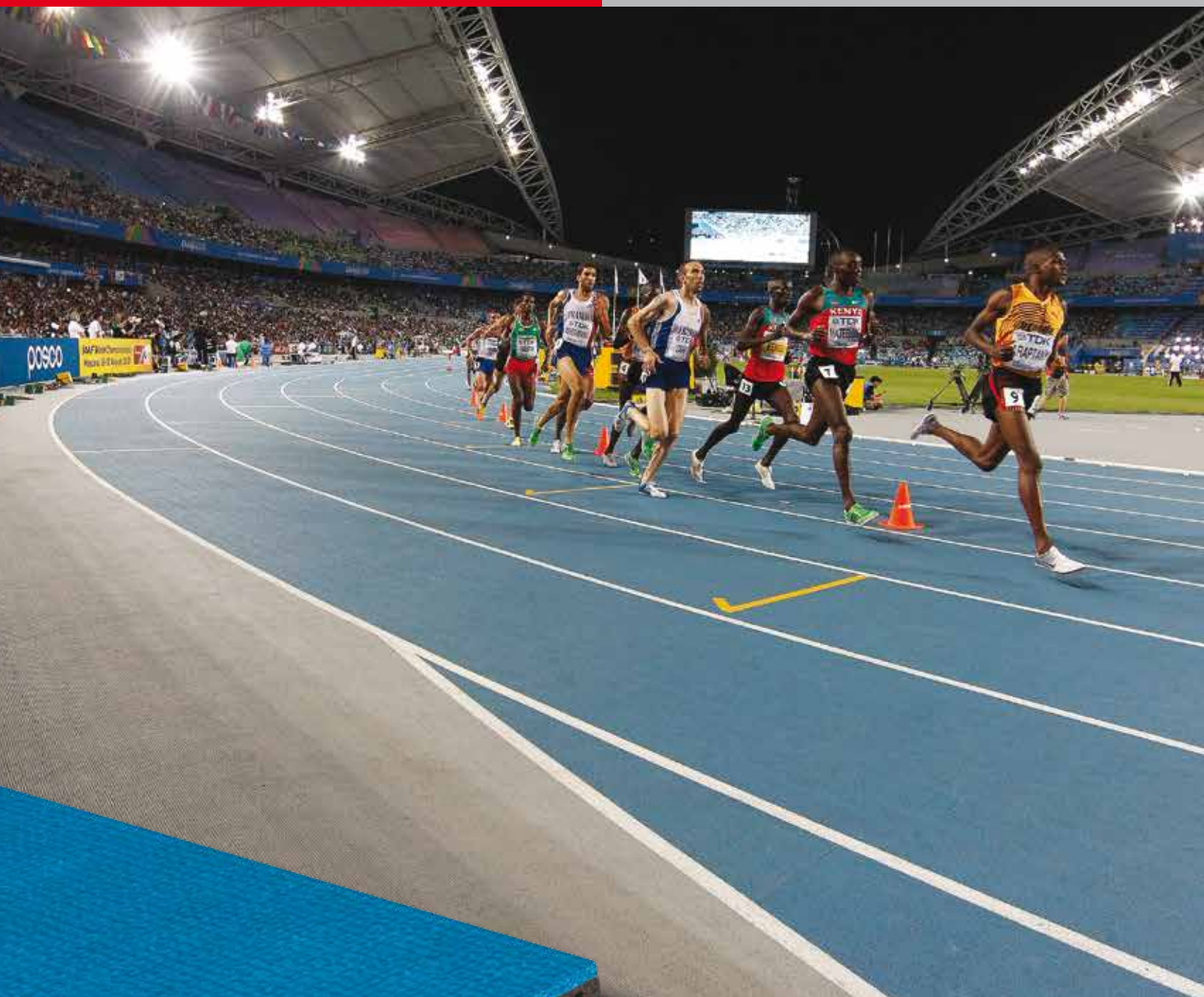


# SUPER X PERFORMANCE

## OUTDOOR & INDOOR RUNNING TRACK



## SUPER X PERFORMANCE

Super X Performance is Mondo's legendary prefabricated vulcanized rubber track surface with the highly acclaimed top layer and waffle backing.

**RFS**  
sport flooring + lockers

# SUPER X PERFORMANCE



## SPECIFICATIONS

Texture:	Super X Performance Embossing
Thickness:	15/64" (6mm) 5/16" (8mm)
Roll Width:	4' 0" - 6' 0" (1.22m - 1.83m)
Roll Length:	49' 2" (15m)*
Thickness:	3/8" (10mm) 1/2" (12mm) 17/32" (13.5mm)
Roll Width:	3' 0" - 5' 6" (0.92m - 1.70m)
Roll Length:	49' 2" (15m)*

## COLORS\*\*



Red P30



Cognac P58



Green P10



Dark Green P14



Medium Blue P18



Light Blue P85



Medium Grey P31



Light Grey P70

\*Average length from production.

\*\*Custom colors available; minimum quantity required.

## KEY BENEFITS

- Highly durable; withstands static and rolling loads
- Embossed for superior traction indoors and outdoors
- Shock absorption layer for safety and comfort
- Stain resistant, no specialized maintenance needed
- Non-slip surface for ease in maneuvering wheelchairs
- Designed to channel water away for high performance in all conditions

## EXPERIENCE

Mondo's proprietary equipment and vulcanization process ensure that biomechanical and physical properties stay consistent over the product's long lifespan.

## HEALTH AND SAFETY

- GREENGUARD GOLD certified for better indoor air quality
- 100% recyclable
- Meets ADA requirements
- Contributes toward LEED points
- Granular-free for healthy waterways
- Heavy metals free and will not leach into the environment
- Excellent bacterial, microbial and fungal resistance properties



Printed in Canada - Revised 11/2016



Please contact us:  
**RFS, Inc.**  
**375 Columbia Memorial Pkwy**  
**Kemah, TX 77565**  
**281.334.6800**  
**info@teamrfs.com**  
**www.teamrfs.com**