

## WHAT TO DO IF YOU FORGET A COMBINATION

The master key can be used at any time to open a lock in the event of an emergency.

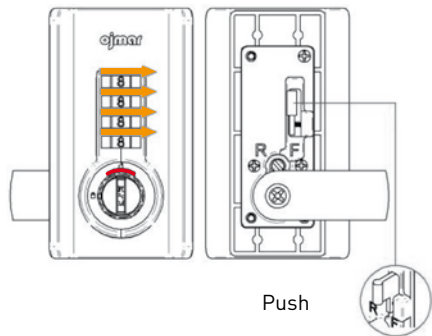
1.

Insert and turn the Master key 90° to open the door if necessary (Fig. A). When the door is open, turn the Master key 90° to close the lock and remove the key or set a new combination.



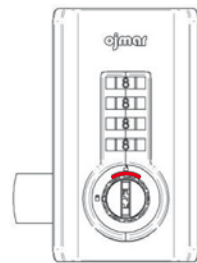
2.

Push the decoding lever while turning each wheel from left to right until it stops or a click is heard (Fig. B).



3.

Release the decoding lever. Now it is possible to continue using the recovered combination or set a new combination (Fig. C).



**ojmar**

INTELLIGENT LOCKING SYSTEMS

Polígono Industrial de Lerun, s/n  
20870 Elgoibar · Spain  
T. +34 943 748484  
[www.ojmar.com](http://www.ojmar.com)

V.1



## LOCKR COMBI

LOCK 8001  
QUICK GUIDE

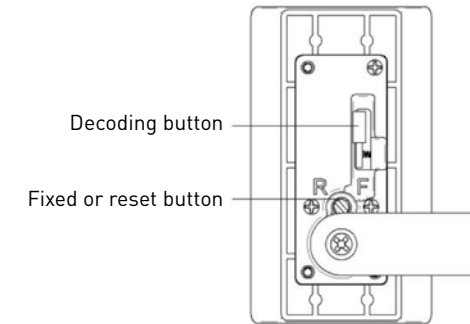
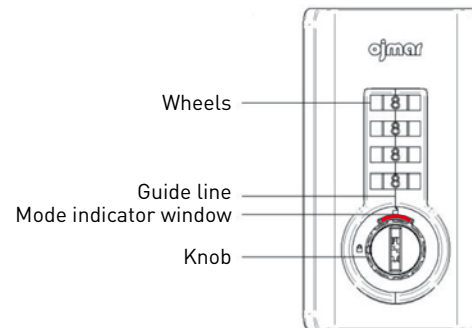


**ojmar**

INTELLIGENT LOCKING SYSTEMS

Distributed by RFS Sports  
T. 281 334 6800  
[info@teamrfs.com](mailto:info@teamrfs.com)  
[www.teamrfs.com](http://www.teamrfs.com)

**RFS**  
**SPORTS**



## HOW TO CHANGE A COMBINATION

- To set a new combination, there are 2 operating modes, the fixed combination (F) or the "reset" or open (R) combination.

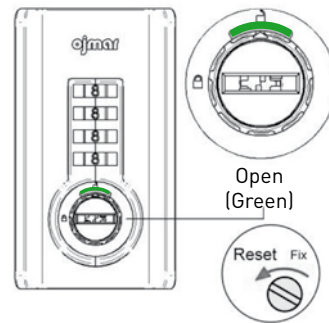
- The combination defined at the factory is 0-0-0-0.

### FIXED VERSION.

In the fixed combination mode, the lock is always opened and closed using the same combination established by the user.

#### 1.

Check that the lock is in the open position (green) and that the button at the rear of the lock is turned to "reset" (R).(Fig. D).

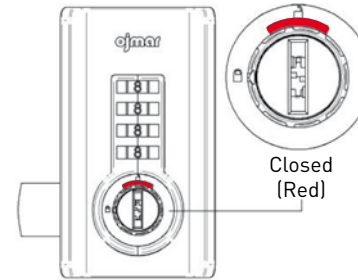


#### 2.

Set the personal combination required.

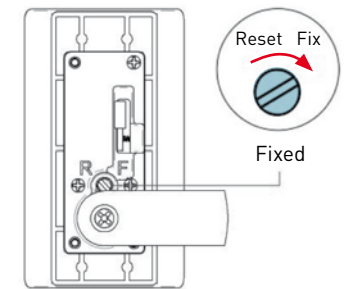
#### 3.

Turn the knob 90° to closed. The colour in the window changes to red (Fig. E).



#### 4.

Turn the button at the rear of the lock to "Fix" (F). Now the lock will always open using the same fixed combination. (Fig. F).

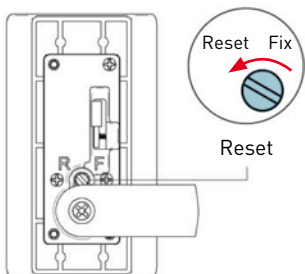


### "RESET" OR OPEN VERSION.

In the "reset" or open combination mode, the combination can be changed every time the lock is opened.

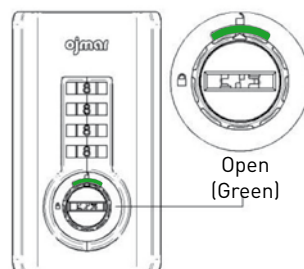
#### 1.

With the lock closed, turn the button at the rear of the lock to "reset" or open (R) (Fig G). Leave the button in this position.



#### 2.

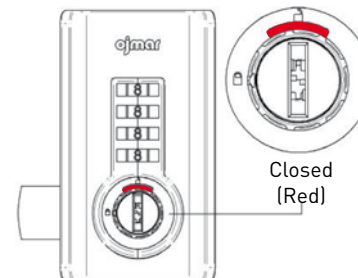
Turn the knob 90° to open. The colour in the window changes to green (Fig. H).



#### 3.

Now the combination can be changed before turning the knob to closed (red).

Set the required combination before closing the door and do not forget the combination (Fig. I).



- Close the door and turn the wheels before leaving. Now your locker is closed.

- Always keep combinations secret and in a safe place, accessible for future consultation.